

Quick Burrowing Owl Survey 2010

Purpose and methodology: The intent of the survey was to see how many juvenile owls could be observed in a quick visit to known nest locations. Not all roads were driven and areas where Burrowing Owls were not observed in 2007 or 2009 were not visited. Observations were made 2 to 5 weeks later in the year than the previous 2007 or 2009 surveys. More juvenile owls were expected to have emerged from nests.

Summary of Observations: A total of 42 Burrowing Owls (15 adult, 24 juvenile, 3 unknown age) were observed and at least 8 nests were located during three mornings of observations. Owls were observed at fewer locations than in previous years but more juvenile owls were seen. Juvenile owls were seen at 7 of 8 nest locations.

Map and Notes: 2009 and 2010 Burrowing Owl locations are indicated on a copy of the Kern Water Bank roads map. Observations of owls and other birds are below. Additionally, 2010 Burrowing Owl locations with a breakdown of adults, juveniles and other information are indicated on another form.

Thank you for allowing me to look for Burrowing Owls at the Kern Water Bank. If additional information is needed, I can be contacted at blydecker@gmail.com or by calling 661-900-8595.

Bill Lydecker
July 8, 2010

Observations

Location: Kern Water Bank - W of Hwy 43, E of I-5
Observation date: 6/24/10

Notes: Loggerhead Shrike nest in this area and at least one juvenile was observed. Grass was taller in some of the fields than in 2009 or 2007. Cattle were actively grazing while I visited the area. One coyote was observed. I am surprised that fewer locations were observed with owls in the oil field area NE of the intersection of Hwy 43 and the KWB Canal. Also, the location with 6 juvenile owls was slightly different than where they were observed in previous years. However, where owls were observed is close to where I saw a Burrowing Owl in winter in the 2008 Christmas Bird Count. I think this is a year-round Burrowing Owl location.

Number of species: 18

Gadwall 1
Cinnamon Teal 2
California Quail 70
Great Egret 1
Snowy Egret 1
Red-tailed Hawk 3
American Kestrel 3
Mourning Dove X
Burrowing Owl 15 5 adult, 10 juvenile, 2 nest locations
Black Phoebe 1
Western Kingbird 1
Loggerhead Shrike 5
American Crow 4
Common Raven 1
Cliff Swallow X
swallow sp. X
Northern Mockingbird 3
California Thrasher 2
Tricolored Blackbird 30
blackbird sp. 50

Location: Kern Water Bank - S of Panama Lane, E of I-5
Observation date: 6/29/10

Notes: Loggerhead Shrike nest in the area. Field immediately north of Burrowing Owl nest location was being cultivated. Over 100 crows or ravens were present foraging in the newly plowed field.

Number of species: 11

Northern Harrier 1
Red-tailed Hawk 1
Golden Eagle 1
Mourning Dove 7
Greater Roadrunner 1
Burrowing Owl 4 1 juvenile, 3 age unknown, 1 nest location
Western Kingbird 7
Loggerhead Shrike 5
American Crow X
Common Raven X
Northern Mockingbird 3

Location: Kern Water Bank - S of Kern R., W of I-5
Observation date: 6/29/10

Notes: Also saw 1 coyote and many grazing cattle. Much more grass than in 2007 or 2009. Some pump-jacks and other oil field equipment have been removed since summer, 2009. Burrowing Owl location that was in 2009 near the site of a removed pump-jack is no longer present. In my opinion, the Burrowing Owls in this location may be adversely impacted by the racetrack being constructed nearby.

Number of species: 7

Northern Harrier 1
Red-tailed Hawk 1
Mourning Dove 32
Burrowing Owl 2 1 adult male and 1 adult female present at 1 nest location
Western Kingbird 12
Northern Mockingbird 1
Brown-headed Cowbird 1
blackbird sp. 25

Location: Kern Water Bank - W of I-5, N of Kern River
Observation date: 6/29/10

Notes: No Burrowing Owls were observed near the intersection of the Cross Valley Canal and I-5. Grass is taller than the previous years of surveys. I wonder if construction activity last year as it was concluded may have disrupted the remaining owls that were observed in 2009. Alternatively, taller grass may have produced less favorable habitat. At least two Burrowing Owl nest locations are in the northwest part of the surveyed area. This area benefits from the irrigated fields nearby to the northwest and suitable nest locations in semi-arid elevated terrain along the power line and road right-of-way.

Number of species: 7

Mourning Dove 2
Burrowing Owl 12 4 adult, 8 juvenile, 2 nest locations
Black Phoebe 2
Western Kingbird 4
Loggerhead Shrike 2
American Crow 1
Cliff Swallow 30

Location: Munzer Rd east of Hwy 43
Observation date: 6/30/10

Notes: I have observed Burrowing Owls at this location in winter and summer. However, I have not observed owls every time I visit the location. Observation of juvenile owls and adults confirms that this is a nest location.

Number of species: 6

California Quail 6
Killdeer 1
Mourning Dove 2
Burrowing Owl 5 2 adult, 3 juvenile, 1 nest location
Loggerhead Shrike 1
Common Raven 1

Location: Kern Water Bank - E of Hwy 43, N of Kern River
Observation date: 6/30/10

Notes: Burrowing Owls readily took flight as I approached. It was difficult to determine how many owls were present. I did not observe Burrowing Owls in this area in 2009, but I did observe owls slightly north of this area in 2007.

Number of species: 13

California Quail 11
Accipiter sp. 1
Red-tailed Hawk 1
American Kestrel 3
Mourning Dove 2
Greater Roadrunner 1
Burrowing Owl 4 2 adult, 2 juvenile, 1 nest location
Black Phoebe 1
Western Kingbird 1
Loggerhead Shrike 3
Western Scrub-Jay 2
Common Raven 2
Northern Mockingbird 3
Western Meadowlark 3
blackbird sp. 20

Location: Kern Water Bank - W of Hwy 43, E of I-5
Observation date: 6/30/10

Notes: Drove by a few areas to see if I had missed other Burrowing Owl locations but I did not find additional locations.

Number of species: 11

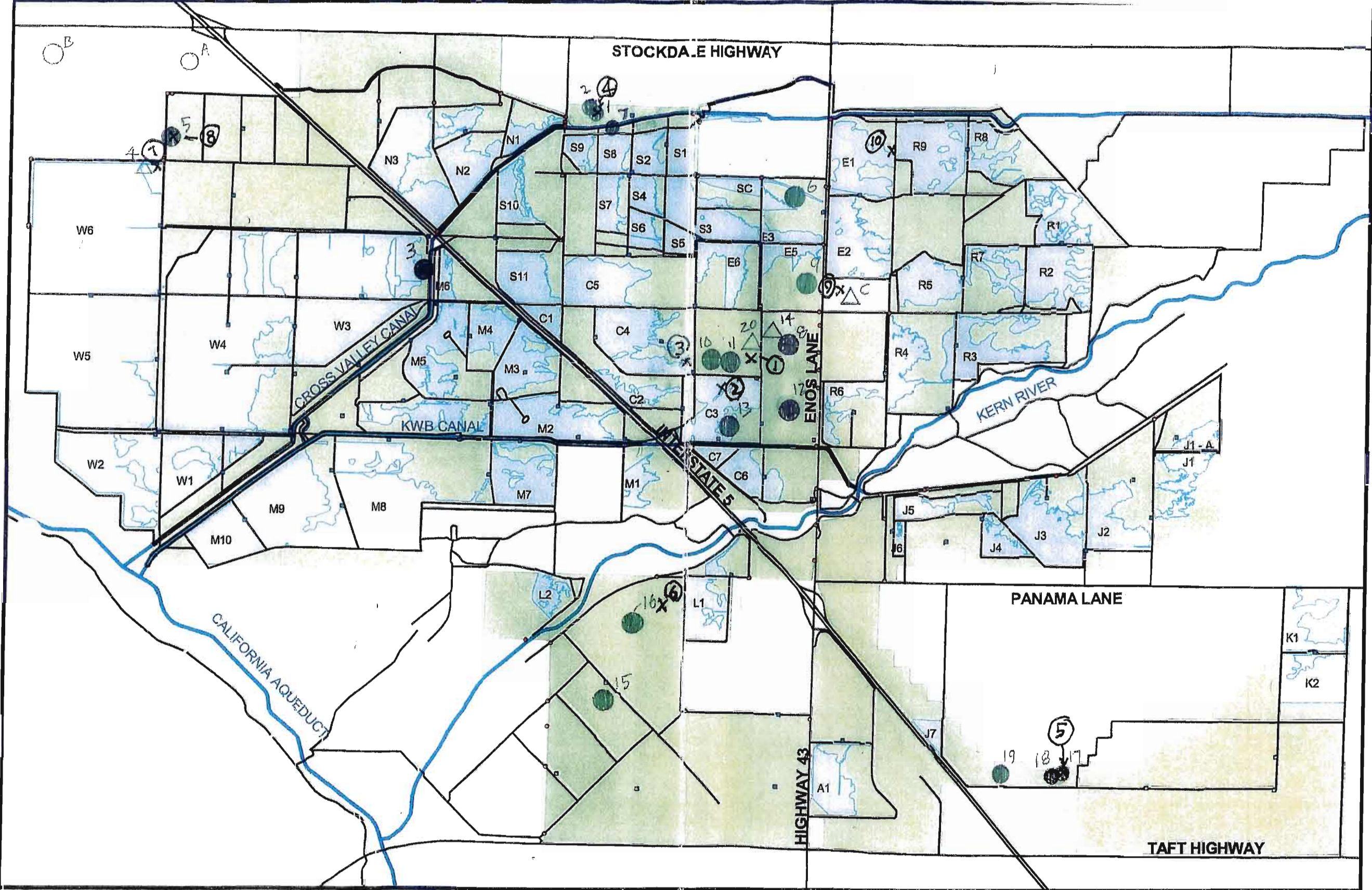
Mallard 4
Cinnamon Teal 1
Great Blue Heron 1
Great Egret 1
Killdeer 2
Mourning Dove X
Greater Roadrunner 1
Black Phoebe 1
Western Kingbird 2
Common Raven 2
Western Meadowlark 5

2010 Burrowing Owl Survey: Locations

UTM Coordinates of Block: _____ N _____ E Observer: Bill Lydecker Year: 2010

Date (m/dd)	Location Code	Northing*	Easting*	No. of Adults	Est. No. of Pairs	No. of Juveniles	Age Unknown	Comments	Note
6/24	1			1	1	1			
6/24	2			1				saw from distance - location uncertain	
6/24	3			1				No nests or other owls nearby	
6/24	4			1	1	1		May be 2 nest locations on ridge	
6/29	5			1	1	1	1	Not sure of age	
6/29	6			1	1				
6/29	7			1	1	1		Possibly another nest between these	
6/29	8			1	1				
6/30	9			1	1	1			
6/30	10			1	1	1			

*If you are using your own personal GPS unit, please be sure to program it to provide coordinates in the NAD27 datum.
 15 adult 24 juv. 3 unknown age



- Gates
 - Wells
 - Roads
 - Recharge Ponds
 - Kern Water Bank Property
- 2010
 x - Locations
 ① - Location Number

Kern Water Bank

BURROWING OWLS

2009 - 2010

- 2009
- Locations (Proven or Probable Nest)
 - Nests off KWB
 - Burrowing Owl seen (Possible / Nest Location)
 - 1 - Location Number



KERN WATER BANK AUTHORITY